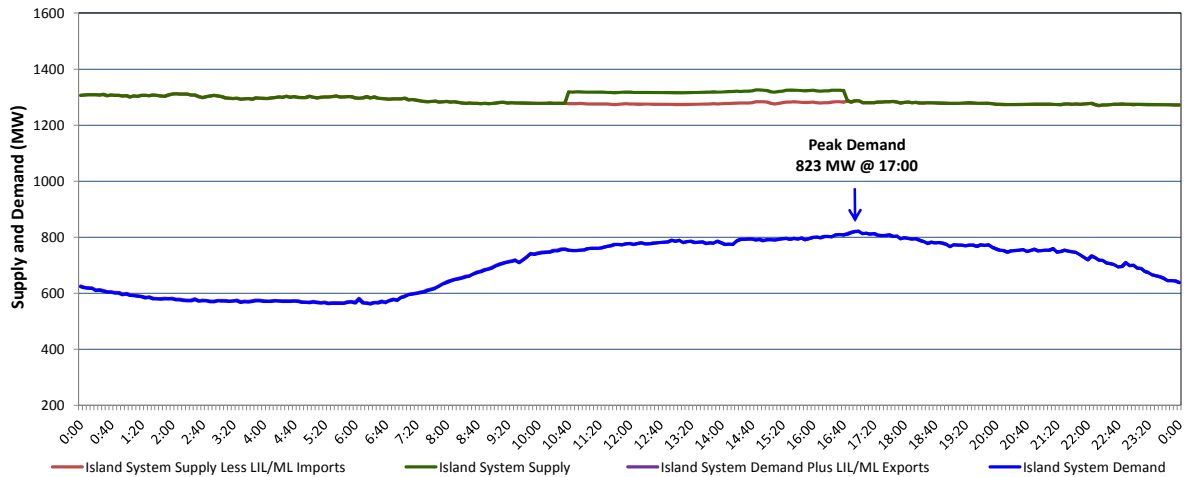


# Newfoundland Labrador Hydro (NLH) Supply and Demand Status Report Filed Tuesday, June 26, 2018

## Section 1 Island Interconnected System Supply, Demand & Exports Actual 24 Hour System Performance For Sunday, June 24, 2018



### Supply Notes For June 24, 2018

- A As of 0801 hours, April 02, 2018, Holyrood Unit 3 unavailable due to planned outage 110 MW (150 MW).  
 B As of 1800 hours, April 29, 2018, Bay d'Espoir Unit 5 unavailable due to planned outage (76.5 MW).  
 C As of 0623 hours, May 08, 2018, Bay d'Espoir Unit 6 unavailable due to planned outage (76.5 MW).  
 D As of 1438 hours, May 22, 2018, Holyrood Unit 2 unavailable due to planned outage 70 MW (170 MW).  
 E As of 1357 hours, June 01, 2018, Stephenville Gas Turbine available at 25 MW (50 MW).  
 F As of 0855 hours, June 11, 2018, Bay d'Espoir Unit 2 unavailable due to planned outage (76.5 MW).  
 G As of 0945 hours, June 11, 2018, Hardwoods Gas Turbine unavailable due to a planned outage 25 MW (50 MW).  
 H As of 1242 hours, June 21, 2018, Holyrood Unit 1 available 88 MW (170 MW).

## Section 2 Island Interconnected Supply and Demand

| Mon, Jun 25, 2018                            |       | Island System Outlook <sup>3</sup> | Seven-Day Forecast       | Temperature (°C) |         | Island System Daily Peak Demand (MW) |                       |
|--|-------|------------------------------------|--------------------------|------------------|---------|--------------------------------------|-----------------------|
|  |       |                                    |                          | Morning          | Evening | Forecast                             | Adjusted <sup>7</sup> |
| Available Island System Supply: <sup>5</sup> | 1,320 | MW                                 | Monday, June 25, 2018    | 6                | 4       | 955                                  | 955                   |
| NLH Generation: <sup>4</sup>                 | 985   | MW                                 | Tuesday, June 26, 2018   | 4                | 5       | 980                                  | 980                   |
| NLH Power Purchases: <sup>6</sup>            | 125   | MW                                 | Wednesday, June 27, 2018 | 6                | 15      | 865                                  | 865                   |
| ML/LIL Imports:                              | -     | MW                                 | Thursday, June 28, 2018  | 13               | 20      | 795                                  | 795                   |
| Other Island Generation:                     | 210   | MW                                 | Friday, June 29, 2018    | 15               | 17      | 810                                  | 810                   |
| Current St. John's Temperature & Windchill:  | 4°C   | N/A °C                             | Saturday, June 30, 2018  | 14               | 19      | 765                                  | 765                   |
| 7-Day Island Peak Demand Forecast:           | 980   | MW                                 | Sunday, July 01, 2018    | 16               | 25      | 735                                  | 735                   |

### Supply Notes For June 25, 2018

- Notes:
1. Generation outages for running and corrective maintenance are included. These are not unusual for power system operations. They generally do not impact customer supply. The power system operators schedule outages to system equipment whenever possible to coincide with periods when customer demands are low and sufficient supply reserves are available. However, from time to time equipment outages are necessary and reserves may be impacted.
  2. Due to the Island System having no synchronous connections to the larger North American grid, when there is a sudden loss of large generating units some customer's load must be interrupted for short periods to bring generation output equal to customer demand. This automatic action of power system protection, referred to as under frequency load shedding, is necessary to ensure the integrity and reliability of system equipment. Under frequency events typically occur 5 to 8 times per year on the Island Interconnected System and the resultant customer load interruptions are generally less than 30 minutes.
  3. As of 0800 Hours.
  4. Gross output including station service at Holyrood (24.5 MW) and improved NLH hydraulic output due to water levels (35 MW).
  5. Gross output from all Island sources (including Note 4).
  6. NLH Power Purchases include: CBPP Co-Gen, Nalcor Exploits, Rattle Brook, Star Lake, Wind Generation, Vale capacity assistance (when applicable).
  7. Adjusted for CBPP, Vale and Praxair interruptible load, Maritime Link and Labrador-Island Link exports and the impact of voltage reduction, when applicable.

## Section 3 Island Peak Demand Information Previous Day Actual Peak and Current Day Forecast Peak

|                   |  |       |        |
|-------------------|--|-------|--------|
| Sun, Jun 24, 2018 | Actual Island Peak Demand <sup>8</sup> | 17:00 | 823 MW |
| Mon, Jun 25, 2018 | Forecast Island Peak Demand            |       | 955 MW |

Notes: 8. Island Demand / LIL / ML Exports (where applicable) is supplied by NLH generation and purchases, plus generation owned and operated by Newfoundland Power and Corner Brook Pulp & Paper (Deer Lake Power, DLP).